



# *The United Churches of Olympia* **VOICE**

NEWSLETTER • VOLUME 75, ISSUE 5 • WEDNESDAY, MARCH 3, 2010

## HOLY WEEK EVENTS

### PALM/PASSION SUNDAY

March 28, 8:15 and 11:00 special services with Palm Procession.

### HOLY WEEK NOON ORGAN RECITALS

Monday, March 29—Thursday, April 1 at **The United Churches**  
Friday, April 2 at **First United Methodist Church**, 1224 Legion Way SE

### MAUNDY THURSDAY

April 1, 6:30 p.m. Soup Supper and Communion

### GOOD FRIDAY

April 2, 7:00 p.m. service at **Westminster Presbyterian Church**,  
1925 Blvd Rd SE. "The Weeping Tree," by Joseph M. Martin, a Good  
Friday Cantata, sung by the combined Presbyterian Church choirs, and  
directed by Terry Shaw.

### EASTER SUNDAY

April 4, 8:15 and 11:00 a.m. services. Easter Breakfast 7:30-12:30.

## AN INVITATION TO MEMBERSHIP ORIENTATION

*Mark Dowdy, Pastor*

We have a number of worshippers who have indicated an interest in attending a membership orientation class. Thus, on Sunday afternoon, **March 7, from 12:30-2:00 p.m.**, you are invited to meet in Room 106, across from the church office. We will share some of our faith journeys then receive the assignment to visit Council, worships, classes, and Ministries for the next 6 weeks and meet again on Sunday afternoon, April 18, place and time to be determined. You will also have the opportunity to meet your church staff and other leaders on the 18th.

Nursery care will be available if you contact Sandi Trudeau, our church administrator, at 943-1210 or e-mail at [sandi@theunitedchurches.org](mailto:sandi@theunitedchurches.org).

If you have questions, please contact me at 943-1210 or [markd@theunitedchurches.org](mailto:markd@theunitedchurches.org). Looking forward to sharing our journeys and information about our church.

## *Worship Services in Lent*

March 7

LENT 3

8:15 A.M. - Chapel  
11:00 A.M. - Sanctuary

### "Open Invitation"

#### TEXTS:

- Isaiah 55:1-9
- Psalm 63: 1-8
- 1 Corinthians 10:1-13
- Luke 13:1-9

⊕ Food & Other Bank Wagon

6:00 P.M. - Chapel  
**Spirit Service** ~ Labyrinth

March 14

LENT 4

8:15 A.M. - Chapel  
11:00 A.M. - Sanctuary

### "Embracing Love"

#### TEXTS:

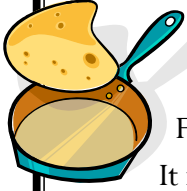
- Joshua 5:9-12
- Psalm 32
- 2 Corinthians 5:16-21
- Luke 15:11b-32




6:00 P.M. - Chapel  
**Spirit Service**  
~ Celebrate Music

# AN INVITATION TO A YEAR'S WORTH OF POTLUCKS AND FUN

Leslie Cushman, Congregational Life Ministry

The Congregational Life Ministry is affectionately known as the pots and pans ministry, and we intend to live up to our reputation in 2010.



Our mission is to create opportunities for fellowship. What is fellowship exactly? Fellowship is companionship on equal terms! It is sharing time, sharing space. Fellowship is reaching out, and being touched back! Fellowship is turning to our neighbors, making eye contact with a stranger, and sharing a smile. Fellowship is sharing your favorite recipe with 100 people! Fellowship is playing Yahtzee with a 7-year old, 10-year old, 36-year old, and a 78-year old, and  having a blast. Fellowship is knowing that you  can sit down at a table and not be ignored,  instead, you will be asked, how are you, where are you from, how is your cat?

This year Congregational Life Ministry has events planned for each month and will need your help to make each event a success. Your job - participate! For what is a party without the partygoers? Please, take out your calendar now, and mark down the dates for

## INCLUSIVE COMMUNION

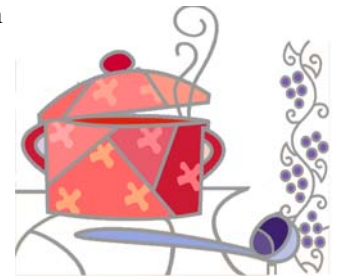
At TUCO we celebrate the sacrament of Communion each month during the Sunday morning services, and weekly at the Sunday evening Spirit Service. The UCC Worship web page notes that *the communion meal recalls the table fellowship Jesus shared with his disciples, and in particular the Last Supper on the night before his death...* Throughout its history these Biblical events have been central to the Church's worship life.

The Presbyterian denomination also gives central importance to these events.

At TUCO, we also celebrate "open com-

munion" meaning that all who wish to join may receive communion. But, what about those of us who are gluten intolerant? We had thought offering a rice cake alternative was "the answer", but have since learned some of us are so gluten-sensitive that dipping rice cake into grape juice others had dipped bread into would cause a reaction. Worship Ministry decided that, beginning in February, we would use only gluten-free bread and grape juice for everyone so all of us can celebrate communion together.

**MARCH 13** is Game Night, and what that means is a potluck followed by board games and such. Bring some food, bring your favorite game, and let it roll. **APRIL** will be the church on parade as we participate in the **PROCESSION OF THE SPECIES** on **April 24**. We will meet a few times prior to this, so watch the Voice for announcements. **MAY** will be a send off for Mark Dowdy, **JUNE** will be a celebration of *Life without a Pastor!* **JULY 10** is the parking lot BBQ, **AUGUST** is the all church retreat. **SEPTEMBER** finds some of us back in school and we will have a life long learning event! In the fall, we have the *Pie Auction Deluxe*, in **NOVEMBER** is the church annual meeting (and potluck) and on **DECEMBER 11** some of us attend the Alternative Giving Fair, and we all get together at the end of the day to eat and decorate the church. **AMEN.**



Pat Dickason, Worship Ministry Chair

mun

If you have questions, please contact **Pat Dickason** at [pdickason@comcast.net](mailto:pdickason@comcast.net) or **Marcia Smith** at [mmsmith@centurytel.net](mailto:mmsmith@centurytel.net)

The Voice is published bi-weekly by  
The United Churches of Olympia,  
PC(USA) & UCC.

360-943-1210

[voice@theunitedchurches.org](mailto:voice@theunitedchurches.org)

Office Hours-

9:00 a.m.- 3 p.m., Tues.-Thurs.

9:00 a.m. - noon, Friday

PASTOR

F. Mark Dowdy

[markd@theunitedchurches.org](mailto:markd@theunitedchurches.org)

## WEDNESDAY A.M. BOOK GROUP

Wednesday, **March 17 at 10:00 a.m.**, is the date for our next book discussion. We will meet at the home of **Libby Penney**, 2621 Chambers Lake Lane SE at Panorama in Lacey. John Irving's, *A Widow for One Year* is the chosen book. We welcome new members. If you would like to attend and ask if a book is available, please call **Olinda Corin** at 456-1304 who will be our discussion leader this month.

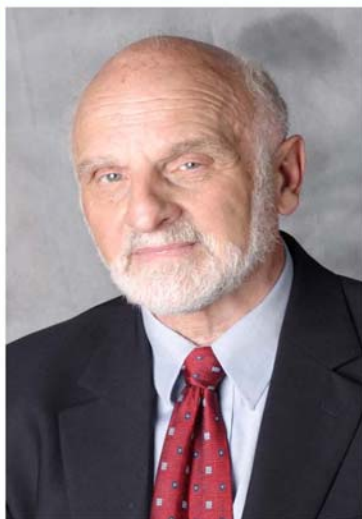
## WORSHIP ELVES

*Pat Dickason, Worship Ministry*

When you come to the 8:15 Sunday service, before you even get in the Chapel door, you are greeted and coffee, tea and treats are on the welcome table in the Narthex. Next, you enter the Chapel...and it's all "in order". Hymnals, Song-books, Bibles, bulletins are on the chairs, the cross and candles and sometimes flowers are on the altar, candles are lit, lights are turned on, piano uncovered, singing bowl out--the Chapel is ready for worship!

Likewise, at the 11:00 Sunday service, you're greeted at the Sanctuary door by an usher handing you a bulletin. The cross and candles and sometimes flowers are on the altar, the lights are turned on, banners are hung, piano uncovered, singing bowl out and the Sanctuary is ready for worship too! At the Spirit Service in the Chapel, the altar and candle-box are set up, communion prepared, songbooks distributed, if it's a Labyrinth Sunday the chairs are removed and the canvas labyrinth rolled out. Again, all is ready for worship!

How does this happen? Do we really have Worship "elves". No—we have **volunteers!** And they *are* faithful! Stewards, ushers, communion servers and preparers, greeters, coffee and treat providers, those who wash altar cloths, make candles for the candle-box, arrange flowers, count the people attending the service, people with amazing hearts and dedication....and all volunteers! Some have been volunteering for many years, some on occasion, some once. We couldn't worship without their care---your care. As we say at every Worship service "no matter who you are, or where you are on life's journey you are welcome here"---and you are welcome to add to the richness of Worship by volunteering. If you've been thinking you'd like to help out please talk with a Worship Ministry member: **Pat Andersen, Linnea Arnett, Pat Dickason, Lynette Hunter, Otavio Lima, Pat Sonnenstuhl, Marcia Smith.** We welcome all!



The Lecture Series of  
University Congregational  
United Church of Christ presents

## Walter Brueggemann

Sponsored by the Dale & Leone Turner Lectures

Walter Brueggemann is the William Marcellus McPheeters Professor Emeritus of Old Testament at Columbia Theological Seminary. He also is an Ordained United Church of Christ Minister. Dr. Brueggemann is the author of *Prayers for a Privileged People*, *Mandate to Difference: An Invitation to the Contemporary Church*, and *The Word Militant: Preaching a Decentering Word*. Described as "provocative, interesting, challenging and imaginative", Walter Brueggemann has written 58 books, hundreds of articles and several commentaries on books of the Bible. Dr. Brueggemann will be speaking on the book of Psalms, the "original recovery program".

### **"The Drama of Rehabilitation"**

Friday, April 9, 2010, 7-8:30 pm

**"The Descent into Truth"**

Saturday, April 10, 2010, 9 am-- noon

**"The Ascent into Hope"**

**Tickets: Advance sales for F/S series - \$40 until 4/02/10  
\$45 after 4/02/10 Friday evening only \$15  
UCC Ministers & students: \$20 for F/S series**

**Sunday, April 11, 2010 free & open to the public**

9 am **"From Obedience to Praise: Psalm 73"**

10 am **sermon: "Authorized for Risk."**

**For ticket information, contact:**

**University Congregational United Church of Christ**

**Attn: The Lecture Series**

**4515 16th Ave., N.E. Seattle, WA 98105-4201  
(206) 524-6255, ext 3447 or [jsg@universityucc.org](mailto:jsg@universityucc.org).**

## LENTEN ADULT ED CLASS: SCIENCE & FAITH IN HARMONY

*Ruth Shearer, Chair, Theology, Natural Sciences Ministry*

The Theology and Natural Sciences Ministry adult study class, "Science and Faith in Harmony" begins on **February 21** in the Fireside Room.

The six-session class is organized around the book, *The Language of God: A Scientist Presents Evidence for Belief*, by Dr. Francis S. Collins, newly-appointed head of the National Institutes of Health. Dr. Collins was head of the Human Genome Project, which deter-

Feb. 21, Ch. 2: The War of the Worldviews

- Tom Skjervold

Feb. 28, Ch. 3: The Origins of the Universe

- Celia Nightingale

Mar. 7, Ch. 4-5: Life on Earth, God's Instruction Book

- Ruth Shearer

mined the entire sequence of DNA, the code of life, in humans. He is also a man of unshakeable faith in God and scripture.

Scientists in our church present their knowledge and experience on the topics raised by Dr. Collins, concluding with a theological point of view from Rev. Paul McCann. Reading the book will prepare for discussion, but is not essential for class participation.

Mar. 14, Ch. 6: Genesis, Galileo and Darwin

- Joe Arnett

Mar. 21, Ch. 7-9: Atheism, Creationism, Intelligent Design

- Ruth Shearer

Mar. 28, Ch. 10: Science and Faith in Harmony

- Paul McCann

## FEBRUARY/MARCH PNC UCC NEWS AVAILABLE ON-LINE

From the Conference website, [www.pncucc.org](http://www.pncucc.org), under Resources click on PNCUCC News. Or, go there directly through: [www.thefigtree.org/pncnews/pncnews.html](http://www.thefigtree.org/pncnews/pncnews.html). The PNC News contains information similar to the conference insert of the United Church News, which ceased publication last fall.

The Conference is studying the best means to communicate and planning to use some of today's technologies as means to distribute the content. Because people have varied preferences for how to receive communications, it's important to let us know your preferences as individuals and congregations. Please e-mail [pncuccnews@qwest.net](mailto:pncuccnews@qwest.net) with feedback or write Mary Stamp at 1323 S. Perry St., Spokane, WA 99202.

## THE SEASON OF LENT

*Mark Dowdy, Pastor*

The Season of Lent began with the Ash Wednesday service, opening the 40 week-day period leading up to the great Celebration of Easter. Lent (from the Old English word for "Spring" and "40 days" in other languages), is that time of the church year when we are called to struggle against everything that leads us away from the love of God and neighbor.

Our Lenten disciplines of self inventory, fasting, prayer, study, worship, and works of love help us journey to an unknown future. A daily devotional is available on our church web site, [www.theunitedchurches.org](http://www.theunitedchurches.org). These same devotionals are available from the table in the Narthex, along with our Lenten brochure with other readings and Lenten events.

## A CALL FOR PAINTERS!

If you are a skilled painter and have a few hours to volunteer some time for a painting project at church on a Sunday afternoon in late March please contact **Deb Nickerson** at [debranick@gmail.com](mailto:debranick@gmail.com).


## NEW VOICE E-MAIL ADDRESS

The Voice newsletter has its own e-mail account. Submit articles to [voice@theunitedchurches.org](mailto:voice@theunitedchurches.org).

The 2010 Voice Schedule and Guidelines are available on the church website, [www.theunitedchurches.org/EdGuidelines.pdf](http://www.theunitedchurches.org/EdGuidelines.pdf), or by requesting a copy at the above e-mail address.

You'll never have to worry about knowing the editor's e-mail address.

# EVENTS AT CHURCH Thursday, March 4 - Saturday, March 20

<b>Thursday March 4</b>	<b>Sunday March 7</b>	<b>Monday March 8</b>	<b>Wednesday March 10</b>	<b>Thursday March 11</b>	<b>Friday March 12</b>
6:00 pm Christian Ed Ministry, Rm. 106 7:00 Missions, Peace & Justice Ministry, Library 7:00 Theology, Natural Sciences Ministry, Chapel 7:00 Worship Ministry, Fireside  <b>Friday March 5</b> 5:30 pm Labyrinth, Social Hall  <b>OVERFLOW SHELTER MARCH 5-18</b>  <b>Saturday March 6</b>	<i>3<sup>rd</sup> Sunday of Lent</i> 7:45 am Chapel Singers, Chapel  <b>8:15 am Worship Chapel</b> 9:30 am Sunday School, & Sr. Highs downstairs; Adult Ed, Fireside Room 10:20 Chancel Choir warm-up, Sanctuary  <b>11:00 am Worship Sanctuary</b> Noon Coffee Fellowship, Fireside 12:30 New Member Orientation, Rm. 106 12:30 Senior Highs, Youth Room  <b>6:00 pm Chapel Spirit Service - Labyrinth</b>	<b>OFFICE CLOSED</b> 1pm Peace Crafters, Karen Watts home, 456-2526  <b>Tuesday March 9</b> 10 am Staff Meeting, Rm. 106 1 pm Worship Planning, Rm. 106 4:00 Bell Choir, Fireside Room 5:15 Personnel Ministry, Rm. 106 5:30 Middlers, Youth Room 6:30 Stephen Ministry Supervision, Fireside	<b>VOICE ARTICLES DUE</b> 6 pm Chapel Singers, Chapel 7:00 Drum Fun, Youth Room 7:00 Festival Choir, Sanctuary 7:00 Art Deco Meeting, Fireside 8:00 Chancel Choir, Sanctuary	7:00 Council Meeting, Fireside	7:00 am Men's Breakfast, continued discussion of Men's Spirituality, The Spar Restaurant, downtown
<b>GOOD FRIDAY CHOIR REHEARSAL</b> The combined rehearsal is <b>Saturday, March 27, 9:00 a.m.—12:00 noon</b> , at Westminster Presbyterian Church, 1925 Boulevard Rd SE.					
<b>Saturday March 13</b> 6:00 pm Congregational Life Ministry Game Night and Potluck, Social Hall  <b>Saturday March 20</b> 6:30 pm Spiritual Cinema Movie & Dessert Potluck, Fireside Room	 <b>Sunday March 14</b> <i>4<sup>th</sup> Sunday of Lent</i> 7:45 am Chapel Singers, Chapel  <b>8:15 am Worship Chapel</b> 9:30 am Sunday School & Sr. Highs, downstairs; Adult Ed, Fireside Room 10:20 Chancel Choir warm-up, Sanctuary  <b>11:00 am Worship Sanctuary</b> Noon Coffee Fellowship, Fireside 12:30 Senior Highs, Youth Room  <b>6:00 pm Chapel Spirit Service ~Celebrate Music</b>	<b>OFFICE CLOSED</b> 1pm Peace Crafters, Karen Watts home, 456-2526  <b>Tuesday March 16</b> 10:00 am Staff Meeting, Rm. 106 1 pm Worship Planning, Rm. 106 4:00 Bell Choir, Fireside Room 5:30 Middlers, Youth Room	<b>Wednesday March 17</b> 6:00 Chapel Singers, Chapel 7:00 Drum Fun, Youth Room 7:00 Festival Choir, Sanctuary 8:00 Chancel Choir, Sanctuary	<b>Thursday March 18</b>	<b>Friday March 19</b> 10am Caring Friends, Fireside Room
<b>UPCOMING EVENTS</b>					
Fri., March 26 Grinnell College Choir concert (w/ Reed Nightingale), 7:00 p.m., Sanctuary March 28 Palm Sunday March 29 – April 2 Holy Week Organ Recitals, 12:00 p.m. Monday –Thursday at TUCO, Friday at First United Methodist April 1 Maundy Thursday Soup Supper and Communion, 6:00 p.m. April 2 Good Friday Service, Westminster Presbyterian Church, 7:00 p.m. April 4 Easter Sunday Cantata Worship Services					



THE UNITED CHURCHES OF OLYMPIA

110 11th Ave SE  
Olympia, WA 98501

Return Service Requested

[www.theunitedchurches.org](http://www.theunitedchurches.org)

Non-Profit  
US Postage Paid  
Olympia, WA  
Permit #147



Begins MARCH 14—Set your  
clocks ahead one hour

## TUCO AND GRINNELL COLLEGE CHOIR

**Reed Nightingale**, son of David and Celia Nightingale and a member of our congregation, will be touring the Northwest with his college choir the "Grinnell Singers". Their last performance stop will be on **Friday March 26** at 7:00 p.m. in our sanctuary. The group is from Grinnell College located in Grinnell, Iowa and it should be a real treat.

There is an opportunity to host students overnight. If that may be of interest to you contact the college at: <http://loggia.grinnell.edu/Page.aspx?pid=984>

## LINKS TO OUR SHROVE TUESDAY PICTURES

Web page: <http://www.theunitedchurches.org/shrovetues.htm>  
The other link is to John's on line Photo Slide Show. You might see yourself there! Downloading the photos are fun, and you can enjoy the event. <http://web.me.com/jtyerfdog/Shrove/Photos.html>  
Also notice, on our website home page, the Lenten reading for the day. It will change daily, so enjoy!

## Prayers For

- ⊕ **The people of Chile** impacted by the February 27 earthquake.
- ⊕ **Ruth Shearer**, now at Panorama C&R, recovering from serious auto accident Feb. 13.
- ⊕ **Jo Johnson**, surgery February 23
- ⊕ **Ron Schultz**, radiation treatment
- ⊕ **Julie Taylor Boyd**, chemotherapy
- ⊕ **Diana D'Aboy**, chemotherapy
- ⊕ **Nora DeMaster**, leukemia
- ⊕ **Joanne Anderson**, Mother Joseph
- ⊕ Your Planning Team and Interim Seeking Committee
- ⊕ Friends and member in care facilities
- ⊕ People serving in the military and law enforcement

